

Attachments

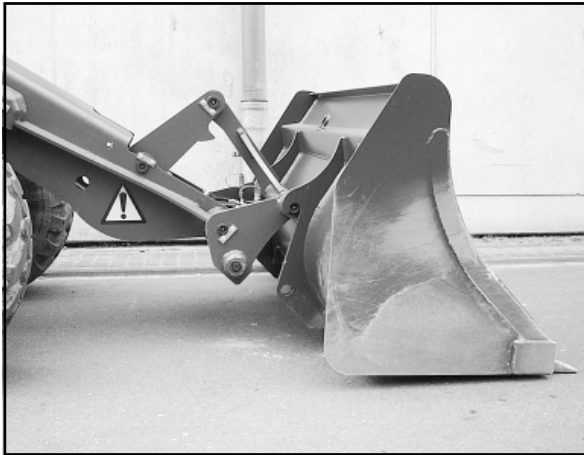


Figure 6-1



Figure 6-2

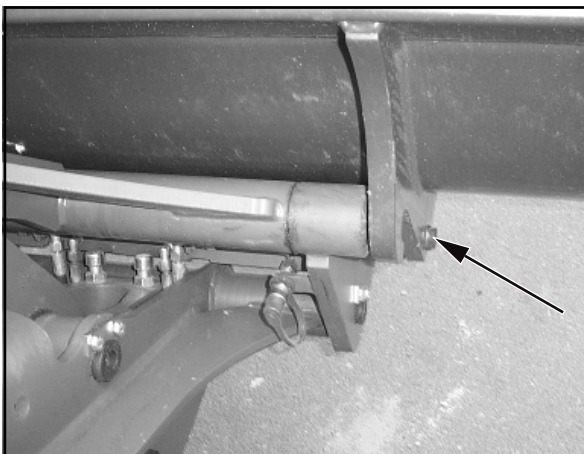


Figure 6-3

6 Attachments

6.1 Mounting and dismounting attachments without hydraulic connections

6.1.1 Standard/lightweight bucket

Mounting

(1) Bring the bucket arm to its lowest position and tip the quick-change device.

(2) Drive the loader up to the bucket (6-1).

(3) Pick up the bucket using the quick-change device and, by simultaneously tilting the quick-change device, raise the bucket until the quick-change device is next to it (6-2).

(4) Lock the bucket with the pilot valve for the auxiliary hydraulics (4-8/5).

(5) Check that the device is mounted and locked correctly on both sides.



DANGER

The two bolts of the quick-change device must be in the bore holes of the bucket suspension and must be clearly visible (6-3/arrow).

Dismounting

(1) Place the bucket firmly on the ground.

(2) Press the release button for the quick-change device (4-8/11) and unlock the bucket with the pilot valves for the auxiliary hydraulics (4-8/5).

(3) Tilt the quick-change device and reverse out.



CAUTION

The hydraulic quick-change device must only be **locked** when an attachment has been mounted.



NOTE

The type plate is on the rear of the bucket, on the right-hand side beneath the cross arm.

6.1.2 Fork-lift attachment



NOTE

Mounting and dismounting are carried out in the same way as for the standard/lightweight bucket (section 6.1.1).



DANGER

- The two bolts of the quick-change device must be in the bore holes of the fork-lift attachment suspension and must be clearly visible (6-4/ arrow).
- Distribute the load equally on both fork tines and secure it against moving and falling off.
- Let the load rest against the rear of the fork and tilt the fork-lift attachment.
- Position both fork tines at an equal distance from the centre (6-5/arrows) and lock them.
- Moving loads with the fork-lift attachment is only permitted close to the ground!
- Protect the fork-lift attachment against tipping over when it has been dismounted; danger of injuries!



CAUTION

- The hydraulic quick-change device must only be **locked** when an attachment has been mounted.
- The fork tines are locked correctly when the two tiltable locking levers fully rest on the fork carrier.



NOTE

The type plate is on the rear of the upper fork carrier, on the right-hand side.

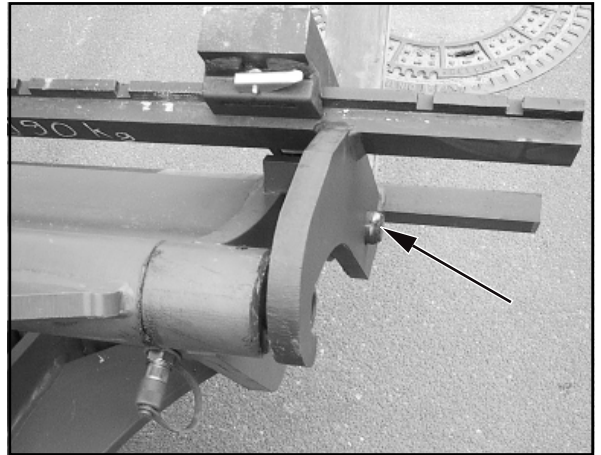


Figure 6-4

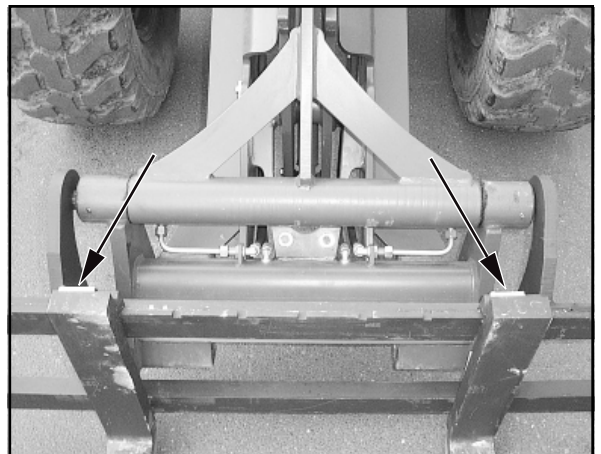


Figure 6-5

6.2 Mounting and dismounting attachments with a hydraulic connection

6.2.1 Multi-purpose bucket

Mounting

- (1) Bring the bucket arm to its lowest position and tip the quick-change device.
- (2) Drive the loader up to the bucket (6-6).

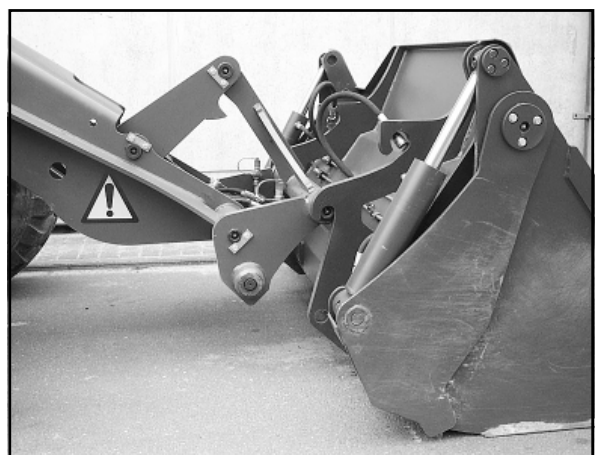


Figure 6-6



Figure 6-7

(3) Pick up the bucket using the quick-change device and, by simultaneously tilting the quick-change device, raise the bucket until the quick-change device is next to it (6-7).

(4) Lock the bucket with the pilot valve for the auxiliary hydraulics (4-8/5).

(5) Check that the device is mounted and locked correctly on both sides.



DANGER

The two bolts of the quick-change device must be in the bore holes of the bucket suspension and must be clearly visible (6-8/arrow).

(6) Shut down the engine.

(7) Depressurise the hydraulic lines. For this purpose, move the pilot valve for the auxiliary hydraulics (4-8/5) back and forth several times.

(8) Pull off the protective caps from the hoses of the quick-change device (6-9/1).

(9) Swing up the protective flaps of the quick-change couplings on the multi-purpose bucket (6-9/2) and connect them with the hoses of the quick-change device (6-9) by tightly pushing them in.



CAUTION

When making connections, make sure that the hydraulic ports are clean and completely connected.

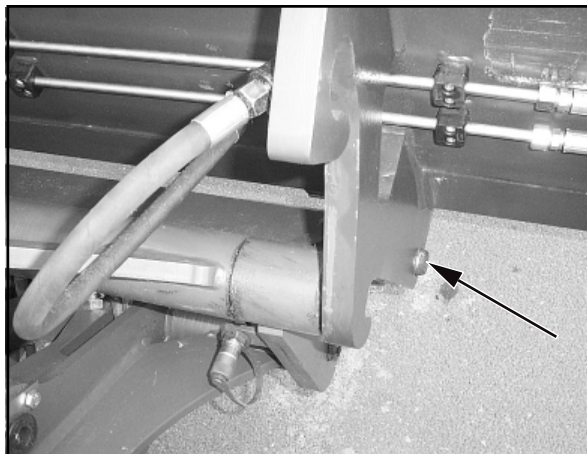


Figure 6-8

Dismounting

(1) Place the multi-purpose bucket firmly on the ground.

(2) Shut down the engine.

(3) Depressurise the hydraulic lines. For this purpose, move the pilot valve for the auxiliary hydraulics (4-8/5) back and forth several times.

(4) Disconnect the quick-change couplings on the multi-purpose bucket from the hoses of the quick-change device by pulling firmly.

(5) Fit the protective caps on the hoses of the quick-change device (6-9/1).

(6) Start the engine and unlock the bucket: Press the release button for the quick-change device (4-8/11) and unlock the bucket with the pilot valves for the auxiliary hydraulics (4-8/5).

(7) Further dismounting is in the reverse order.



CAUTION

The hydraulic quick-change device must only be **locked** when an attachment has been mounted.



NOTE

The type plate is on the rear of the bucket, on the right-hand side beneath the cross arm.

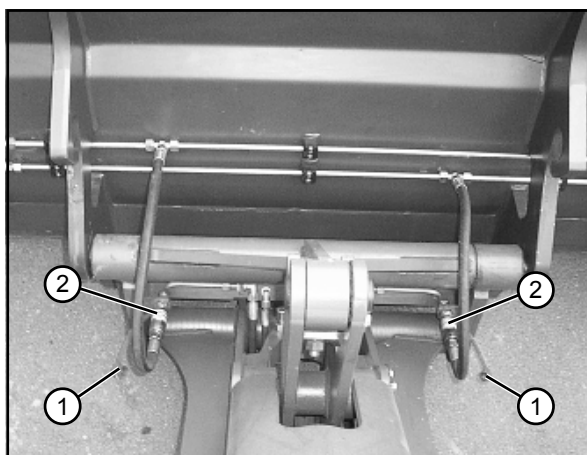


Figure 6-9

Notes on application of the multi-purpose bucket

The multi-purpose bucket can be used for:

- peeling (6-10)



Figure 6-10

- scraping (6-11)

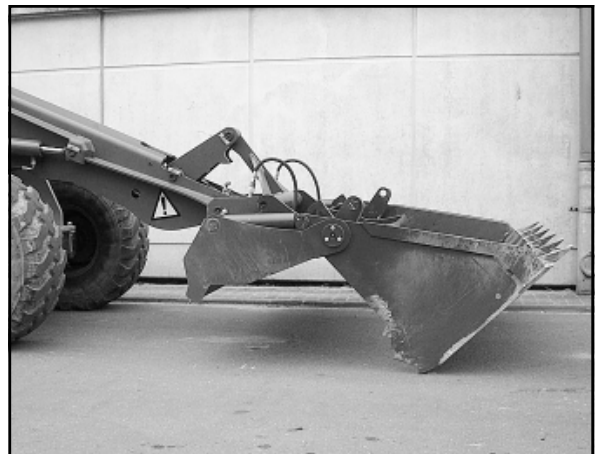


Figure 6-11

- grabbing (6-12) and
- in bucket operation.

6.3 Use of additional attachments



DANGER

1. Only those attachments described in these operating instructions may be used.

2. We emphasise that attachments that are not supplied by us are also not tested and approved by us. Use of such products can under certain conditions adversely affect the present constructional qualities of your loader and thus limit the active and passive driving safety. The manufacturer cannot be held responsible for damage that occurs through the use of such products.



Figure 6-12