

Attachments



Figure 6-1



Figure 6-2

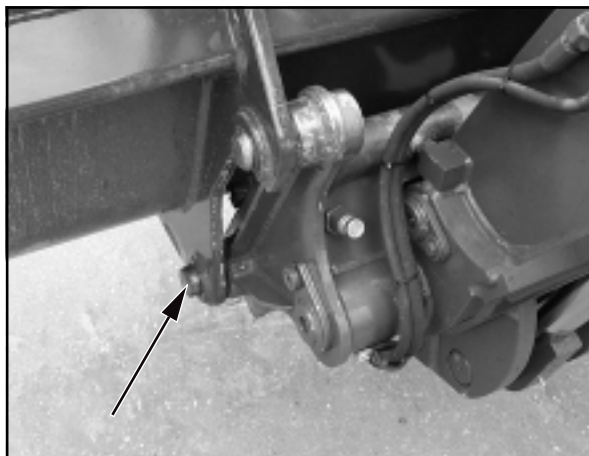


Figure 6-3

6 Attachments

6.1 Mounting and dismounting attachments without hydraulic connections

6.1.1 Standard/lightweight bucket

Mounting

- (1) Bring the telescope arm to its lowest position and tip the quick-change device.
- (2) Drive the loader up to the bucket (6-1).
- (3) Pick up the bucket using the quick-change device and, by simultaneously tilting the quick-change device, raise the bucket until the quick-change device is next to it (6-2).
- (4) Lock the bucket (6-3) with the hand lever for the auxiliary hydraulics (4-12/1).
- (5) Check that the device is mounted and locked correctly on both sides.



DANGER

- The two bolts of the quick-change device must be in the bore holes of the bucket carrier and must be clearly visible (6-3/arrow).
- Check prior to commencing work if the swivel restriction is enabled. For this purpose, the toggle switch (4-20/5) top must be pushed and the switch locked.
- Observe the load indicator (option) (4-7) when working with the standard/lightweight bucket (chapter 4.2.16).

Dismounting

- (1) Place the bucket on the ground in a stable position and protect it from toppling over if necessary to prevent the risk of injury.
- (2) Press the release button for the quick-change device (4-10/7) and unlock the bucket with the hand lever for the auxiliary hydraulics (4-12/1).
- (3) Tilt the quick-change device and reverse out.



NOTE

The type plate is on the rear of the bucket, on the right-hand side of the cross arm.

6.1.2 Fork-lift attachment



NOTE

Mounting and dismounting are carried out in the same way as for the standard/lightweight bucket (section 6.1.1).



DANGER

- The two bolts of the quick-change device must be in the bore holes of the forklift attachment and must be clearly visible to protrude on both sides (6-4/2).
- Check prior to commencing work if the swivel restriction is enabled. For this purpose, the toggle switch (4-20/5) top must be pushed and the switch locked.
- Distribute the load equally on both fork tines and secure it against moving and falling off.
- Let the load rest against the rear of the fork and tilt the fork-lift attachment.
- Position both fork tines at an equal distance from the centre (6-5/arrows) and lock them.
- Protect the fork-lift attachment against tipping over when it has been dismounted; danger of injuries!



NOTE

- The fork tines are locked correctly when the two tiltable locking levers fully rest on the fork carrier.
- The type plate is on the rear of the upper fork carrier (6-4/1).

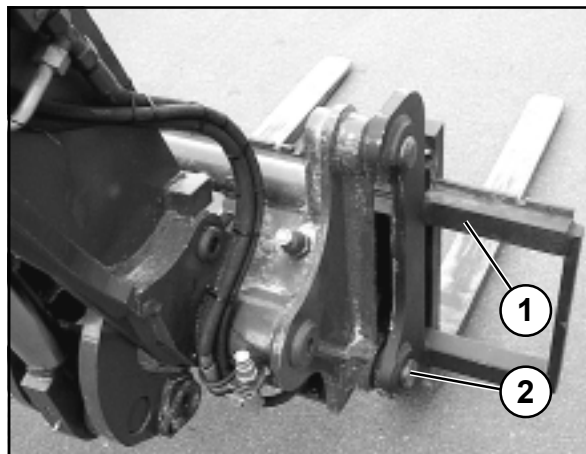


Figure 6-4

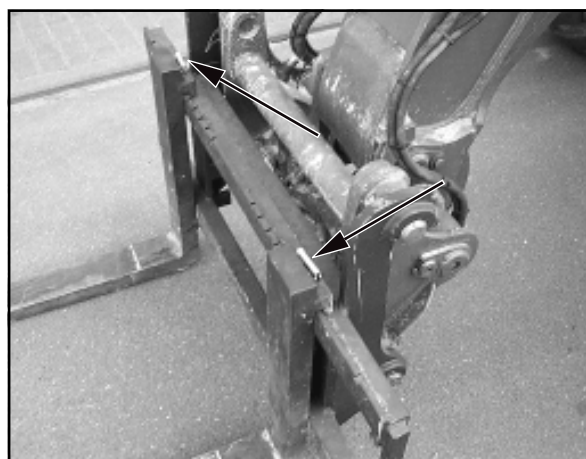


Figure 6-5

6.1.2.1 Picking up an elevated load



DANGER

- Always approach the load at right angles.
- Before picking up an elevated load, the telescope loader must be horizontally aligned in traverse direction. Align the telescopic loader while the telescope arm is retracted. While doing so, the spirit level bubble (6-6/arrow) must be between the two markings.
- The telescope arm should be extended as little as possible. When introducing the forks, make sure there is sufficient clearing between the telescopic loader and the stack where the load to be picked up is located.
- Make sure prior to lifting a load that the steering is straight ahead if possible.
- Slightly lift and tilt up the load to stabilise it after having picked up an elevated load.



Figure 6-6

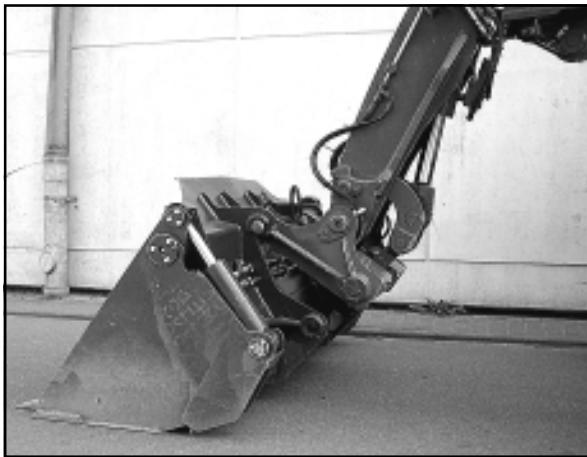


Figure 6-7

- Observe the load indicator (4-7) (chapter 4.2.16)!
- Retract telescope and move swivel unit to a straight forward position if one of the red indicators lights up.
- Deposit the load immediately and reduce the weight if possible when one of the red indicators is still lit.



NOTE

The same instructions as for picking up an elevated load analogously apply to depositing an elevated load.

6.1.3 Lifting hook



NOTE

Mounting and dismounting are carried out in the same way as for the standard/lightweight bucket (section 6.1.1).



DANGER

- The two bolts of the quick-change device must be in the bore holes of the lifting hook attachment and must be clearly visible to protrude on both sides.
- Check the safety flap of the crane hook for proper functioning.
- Check prior to commencing work if the swivel restriction is enabled. For this purpose, the toggle switch (4-20/5) top must be pushed and the switch locked.
- Observe the load indicator (4-7) when working with the lifting hook (chapter 4.2.16).
- Protect the lifting hook against tipping over when it has been dismounted; danger of injuries!



Figure 6-8

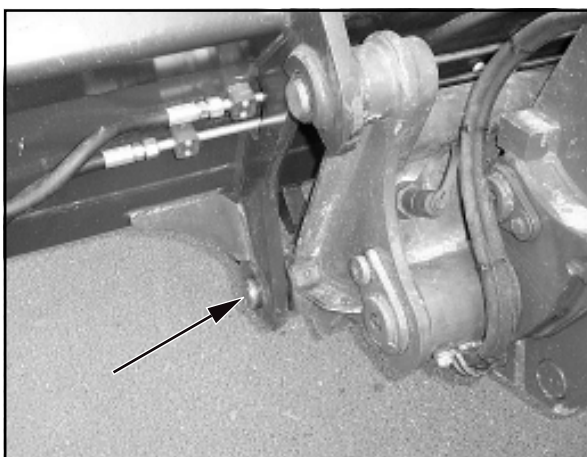


Figure 6-9

6.2 Mounting and dismounting attachments with hydraulic connections

6.2.1 Multi-purpose bucket

Mounting

- (1) Bring the telescope arm to its lowest position and tip the quick-change device.
- (2) Drive the loader up to the bucket (6-7).
- (3) Pick up the bucket using the quick-change device and, by simultaneously tilting the quick-change device, raise the bucket until the quick-change device is next to it (6-8).
- (4) Lock the bucket (6-9) with the hand lever for the auxiliary hydraulics (4-12/1).
- (5) Check that the device is mounted and locked correctly on both sides.



DANGER

- The two bolts of the quick-change device must be in the bore holes of the bucket carrier and must clearly visible to protrude on both sides (6-9/arrow).
- Check prior to commencing work if the swivel restriction is enabled. For this purpose, the toggle switch (4-20/5) top must be pushed and the switch locked.
- Observe the load indicator (4-7) when working with the multi-purpose bucket (chapter 4.2.16).

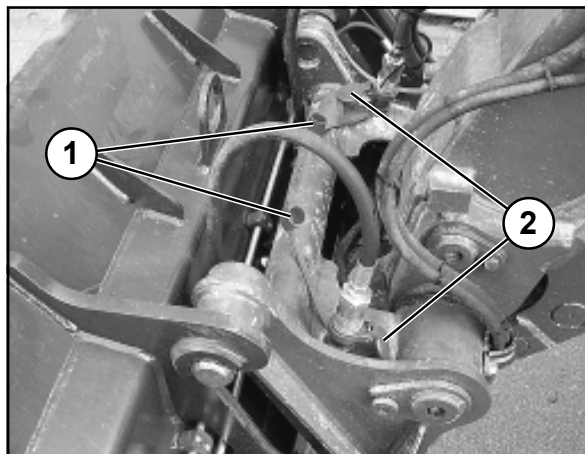


Figure 6-10

- (6) Shut down the engine.
- (7) Depressurise the hydraulic lines by moving the hand lever for the auxiliary hydraulics (4-12/1) to and fro.
- (8) Pull off the protective caps from the hoses of the quick-change device (6-10/1).
- (9) Swing up the protective flaps of the quick-change couplings on the multi-purpose bucket (6-10/2) and connect them with the hoses of the quick-change device (6-10) by tightly pushing them in.



CAUTION

When making connections, make sure that the hydraulic connections are clean and completely connected.

Dismounting

- (1) Place the multi-purpose bucket on the ground in a stable position and protect it from toppling over if necessary to prevent the risk of injury.
- (2) Shut down the engine.
- (3) Depressurise the hydraulic lines by moving the hand lever for the auxiliary hydraulics (4-12/1) to and fro.
- (4) Dismounting takes place in the reverse order of mounting. However, to unlock the multi-purpose bucket, the release button for the quick-change device (4-10/7) must be used.



NOTE

The type plate is on the rear of the bucket, on the right-hand side beneath the cross arm.



Figure 6-11

Notes on the application of the multi-purpose bucket

The multi-purpose bucket can be used for:

- peeling (6-11)



Figure 6-12

- scraping (6-12)



Figure 6-13

- grabbing (6-13) and

- in bucket operation.

6.3 Mounting and dismounting rear attachments

6.3.1 Rear mounting plate



NOTE

You can use the rear mounting plate to attach, for example, a sand or salt distributor.



CAUTION

- Park the loader on solid and level ground.
- Perform mounting and dismounting with the loader standing horizontally and the telescope arm in the lowest position.
- The engine must be turned off.
- Immobilise the loader with the parking brake (4-14/2).

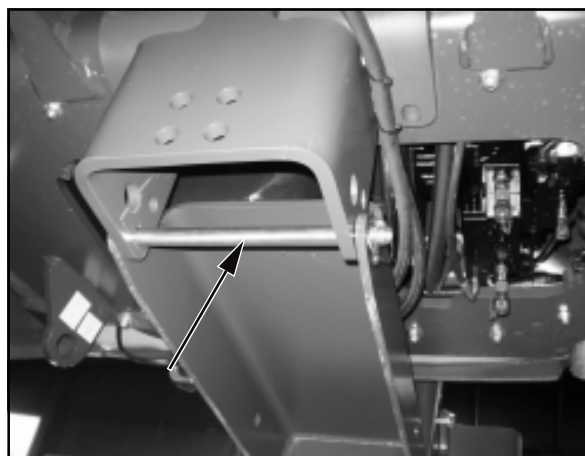


Figure 6-14

Mounting

(1) Remove the shunting and towing coupling:

To do so, loosen the four fastening screws of the shunting and towing coupling and remove them together with the shunting and towing coupling.



NOTE

Give directions to the driver of the assisting loader with regard to travelling, steering and working movements (tilting/dumping, lifting/lowering).

(2) Dismount the counterweight underneath the engine. To do so, approach the assisting loader with mounted fork-lift attachment to the counterweight from the rear so that the forks lightly touch the counterweight and can safely pick up the counterweight.

Loosen the three fastening screws, lower the fork-lift attachment with the counterweight and back out.

(3) Place the rear mounting plate on the fork-lift attachment and move it underneath the chassis so that the rear mounting plate can be connected to the receptacle at the chassis by pushing in the bolt (6-14/arrow). Secure the bolt with a linchpin.

(4) Swing control lever (6-15/2) to the rear as shown in picture 6-15.

(5) Position the rear mounting plate by tilting/dumping or lifting/lowering the fork-lift attachment until the bolt can be pushed into the location hole of the rear mounting plate (6-15/1). Secure the bolt with a linchpin.

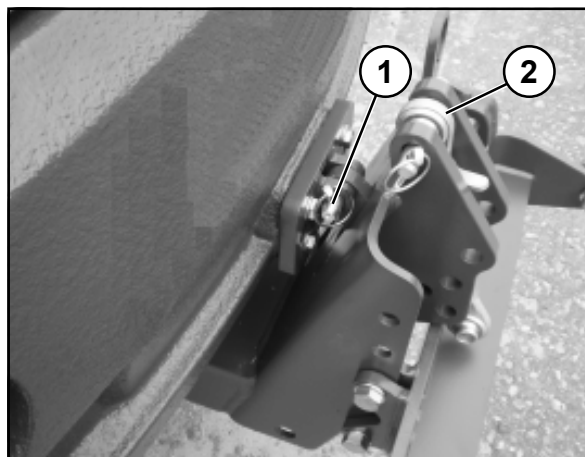


Figure 6-15



NOTE

Hydraulic and/or electric ports (6-16/1 and 6-16/2) are located at the loader rear for attachments requiring a hydraulic or electric connection.

Dismounting

To dismount, proceed in the reverse order of steps.

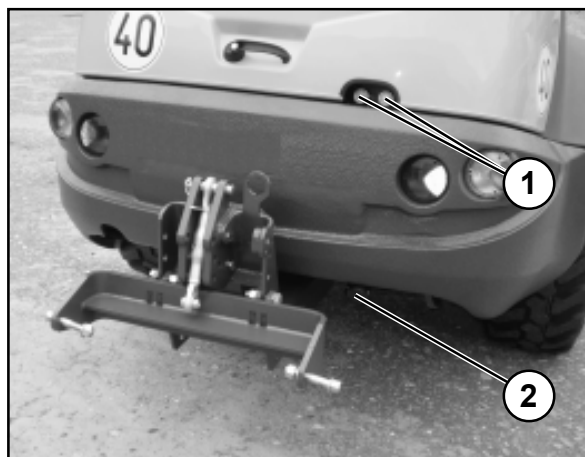


Figure 6-16

6.4 Use of additional attachments



DANGER

1. Only those attachments described in these operating instructions may be used.
2. We emphasise that attachments that are not supplied by us are also not tested and approved by us. Use of such products can under certain conditions adversely affect the present constructional qualities of your loader and thus limit the active and passive driving safety. The manufacturer cannot be held responsible for damage that occurs through the use of such products.