

## **Protection against theft**

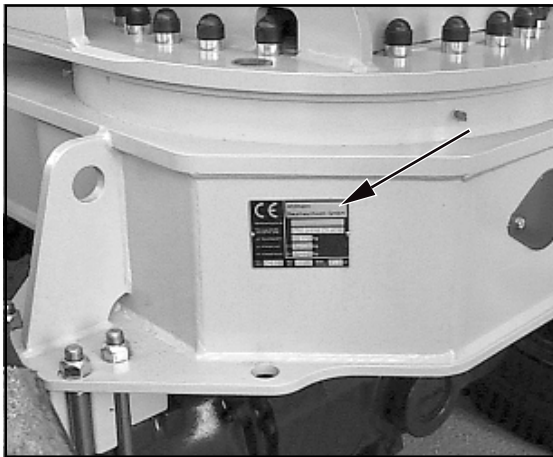


Figure 3-1

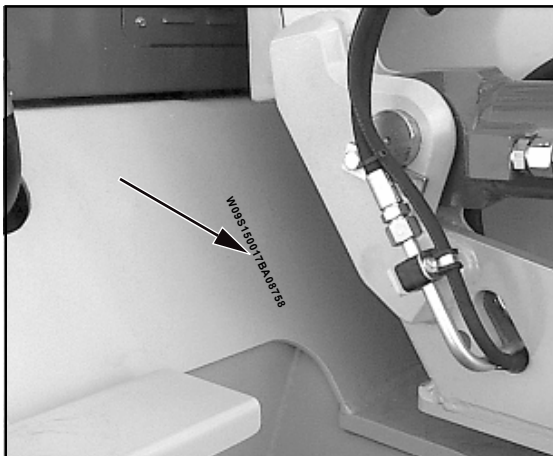


Figure 3-2

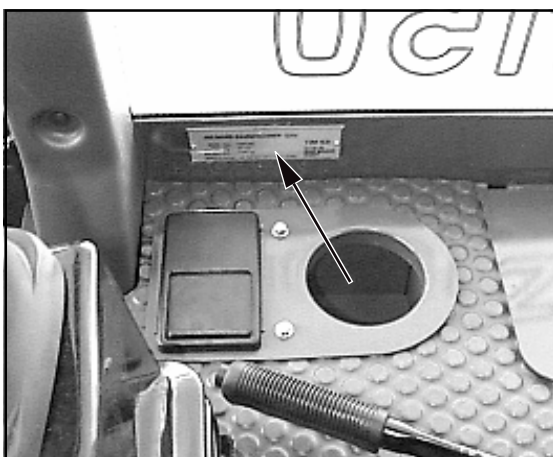


Figure 3-3

### 3 Protection against theft

Instances where construction machines were stolen have considerably increased in recent years.

To make it possible for the police, customs and other authorities to find and identify machines much faster, **MECALAC** construction machines are fitted with the following identifying features:

#### 3.1 Identifying features on the loader

(1) Loader type plate (3-1/arrow). Among other details, the loader type plate also gives the 17-digit **FIN** number (truck identification number) starting with W09.

(2) The **FIN** number is also stamped into the front part (3-2/arrow) of the loader.

(3) ROPS plate (3-3/arrow).

This plate gives the name of the manufacturer as well as details on the ROPS type, the loader type and the permissible overall weight.

#### 3.2 Parking the loader

(1) Turn the steering wheel fully to the left or the right.

(2) Apply the parking brake (4-7/4).

(3) Tip the quick-change device until

- the tines of the bucket,
- the tines of the fork-lift attachment or
- the boom of the lifting hook, etc.

is placed on the ground.

(4) Close both ball block valves (1-2/1 and 1-2/2).

(5) Set the drive switch (4-7/3) to „forward“ or „reverse“.

(6) Switch to gear stage "Alpha max. (snail symbol)" with the gear shift (4-7/1) on the pilot valve for working hydraulics.

(7) Remove the ignition key.

(8) Remove the main battery switch (8-31/2).

(9) Switch on the working lights (4-8/17). \*

(10) Switch on the warning beacon (opt.) (4-8/6). \*

(11) Switch on the hazard flasher (4-8/14). \*

(12) Push the steering column switch (4-5/5) to the "High beam" position. \*

(13) Lock both doors.

(14) Lock the engine hood.

(15) Lock the tank lid.

\* In case of short-circuiting, persons in the vicinity should be made aware of the unusually lit machine.

### **3.3 Transponder for drive-away interlock**

(option)

The „transponder for drive-away interlock“ is an electronic drive-away interlock that deactivates vital loader functions. If the transponder (e.g. a tag at the ignition key) is taken away from the receiver unit (in the immediate vicinity of the ignition lock), these vital functions are interrupted.

#### **Advantages in case of an insured event:**

The transponder for drive-away interlock meets the new, stricter requirements of the insurance companies.  
Ask your insurance company for the appropriate details.

