

Anti-Theft Protection

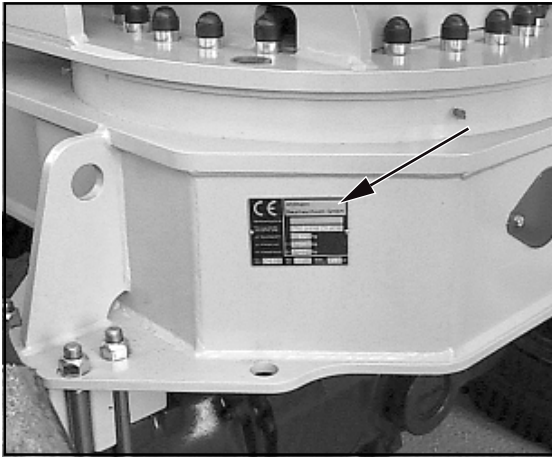


Fig. 3-1

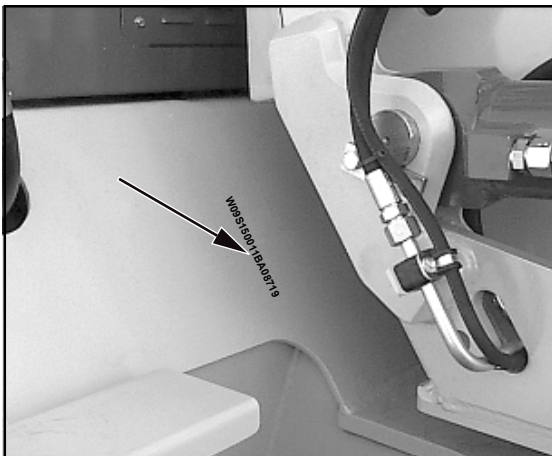


Fig. 3-2

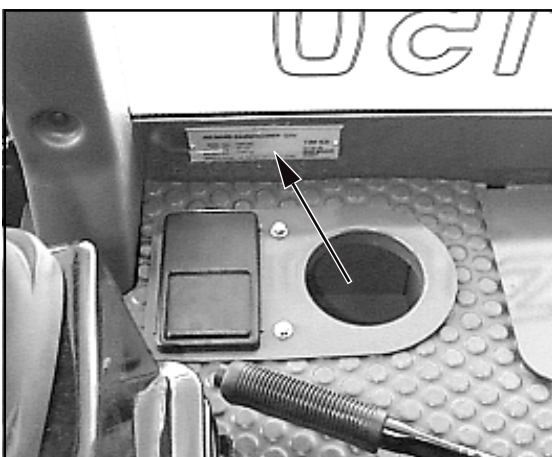


Fig. 3-3

3 Anti-Theft Protection

Recent years have seen a sharp increase in the number of thefts of construction machinery.

To allow the authorities (such as the police, or customs and excise) to discover and identify stolen vehicles more quickly, **Ahlmann** construction machines are fitted with the following identification marks:

3.1 Equipment ID marks

(1) The machine type plaque (3-1/arrow). Amongst other details this includes the 17 digit **FIN** number (vehicle identification number) which starts with W09.

(2) The **FIN** number is also punched into the front of the vehicle (3-2/arrow).

(3) The ROPS plaque (3-3/arrow). This includes the name of the manufacturer, details of the ROPS type, vehicle type, and max. permitted weight.

3.2 Parking the vehicle

(1) Turn the steering to the left or right till it locks in place.

(2) Put the parking brake on (4-7/4).

(3) Lower the quick change mechanism to allow

- the lip of the bucket,
- the forks of the fork loader,
- the lifting hook boom

to touch the ground.

(4) Close both stop valves (1-2/1 and 1-2/2).

(5) Place gear lever (4-7/3) in "forward" or "reverse".

(6) - **Slow-runners:**

- Use gear selection switch to select gear "I" (4-8/4).
- Select hydraulic drive level "I" (4-7/1).

- **Fast-runners:**

- Use work hydraulics valvecontrol lever (4-7/1) for to select gear "Alpha max. (Turtle symbol)".

(7) Remove ignition key.

(8) Remove main battery key (4-7/5).

(9) Switch on working lights (4-8/24). *

(10) Switch on 360 degree light (SA) (4-8/12). *

(11) Switch on hazard-warning lights (4-8/11). *

(12) Push steering column headlamp switch to select "beam" (4-5/5). *

(13) Lock both doors.

(14) Lock engine hood.

(15) Lock fuel tank filler cap.

* If the vehicle is short-circuited, bystanders will be alerted by the unusual lighting displayed.

3.3 Transponder Immobilizer

(Optional)

The "Transponder Immobilizer" is an electronic immobilizer that disables critical features of the vehicle.

If the transponder (which can be attached to the key-fob for the ignition key) is removed from the vicinity of the receiver (i.e. the vicinity of the ignition lock), these functions are interrupted.

Insurance Benefits:

The transponder immobilizer is in line with the latest stringent requirements imposed by insurance companies. Ask your insurance broker for details!