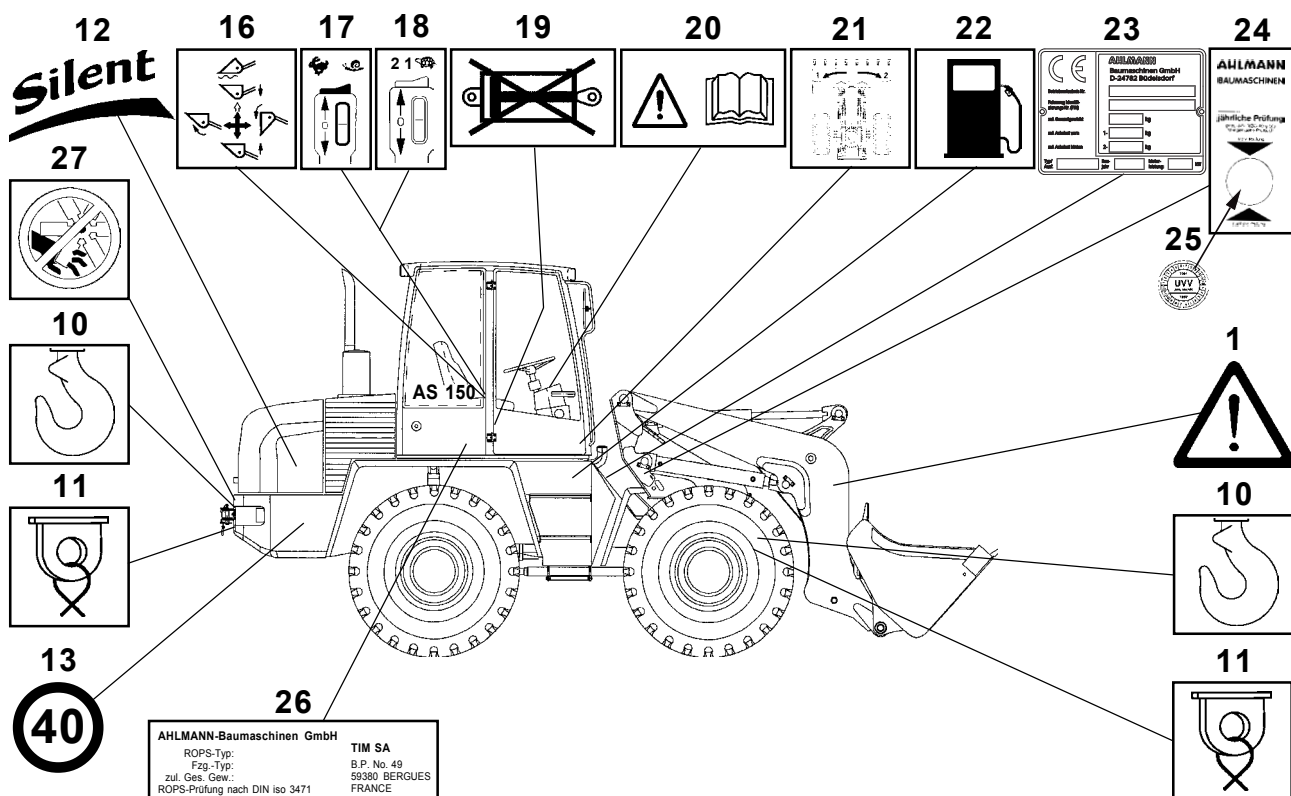
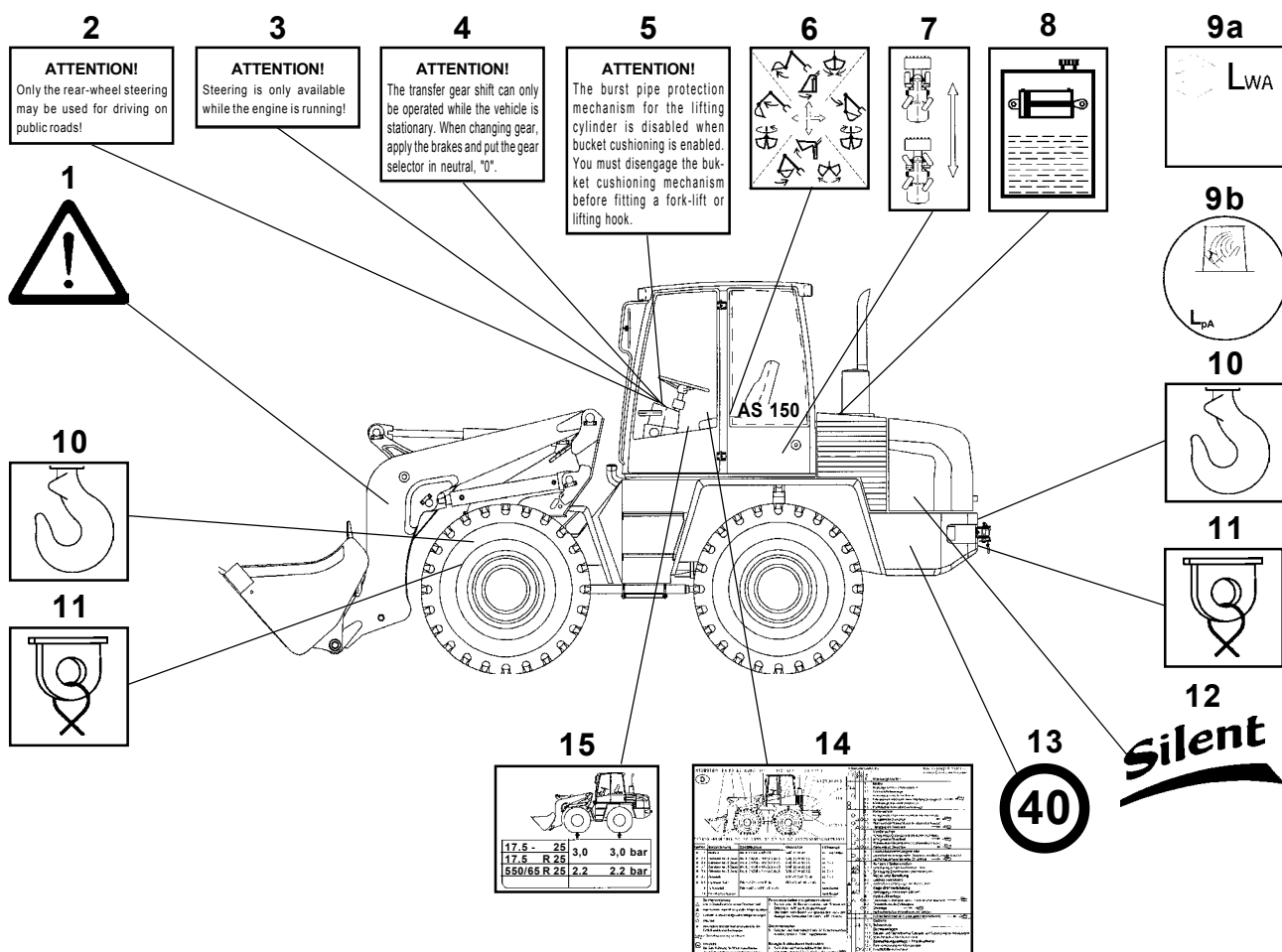


Signs

2 Signs

AHLMANN



- 1 Symbol: Dangerous area, keep clear
- 2 Sign: **ATTENTION!** Only the rear-wheel steering may be used for driving on public roads!!
- 3 Sign: **ATTENTION!** - Steering is only available while the engine is running!
- 4 Sign: **» for slow-runners only «**
ATTENTION!
The transfer gear shift can only be operated while the vehicle is stationary. When changing gear, apply the service brakes and select neutral gear ("0").
- 5 Sign: **» only for machines with pipe burst protection «**
ATTENTION!
The burst pipe protection mechanism for the lifting cylinder is disabled when bucket cushioning is enabled.
You must disable the bucket cushioning mechanism before fitting a fork-lift or lifting hook.
- 6 Symbol: Manual lever for hydraulics (4-6/5) » left of seat «
- 7 Symbol: Switch steering type (4-6/4)
Rear wheel / Four wheel
- 8 Symbol: Hydraulic oil tank
- 9a Sign: Noise level (Chp. 11.17)
- 9b Sign: Acoustic pressure (Chp. 11.17)
- 10 Symbol: Lifting hook
- 11 Symbol: Lashing points
- 12 Sign: Low noise emission equipment
- 13 Sign: Max. speed
- 14 Sign: Maintenance plan
- 15 Sign: Tire pressure
- 16 Symbol: Manual lever for main hydraulics (4-7/2)
- 17 Symbol: **» for slow-runners** (Type 20 km/h and 25 km/h) «
Hydraulic gear shift (4-7/1)
Hare symbol - road
Snail symbol - field
Direction - forwards
- 0
- reverse
- 18 Symbol: **» for quick-runners** (Type 40 km/h) «
Gear lever - 2nd gear
- 1st gear
- Alpha max. (Turtle symbol)
- 19 Symbol: Stop valve for main/auxilliary hydraulics - closed
- 20 Symbol: Read and implement instructions in manual before commissioning.
Ensure that all other users are aware of safety precautions!
- 21 Symbol: Swivel joint
- 22 Symbol: Fuel tank
- 23 Type plate: Machine (includes vehicle ID number)
- 24 Sign: Annual inspection to TC standards
- 25 Sign: TC plaque
- 26 Type plate: Operator's cabin
- 27 Sign: Do not open while engine is running