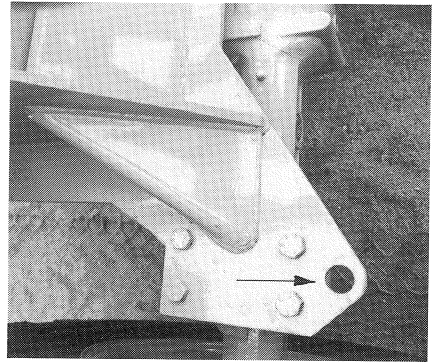


## 7. Towing the loader

Prepare the loader acc. to para 2. Additionally the shovel arm has to be raised slightly to make space for the tow-bar.

If vehicle shall be towed forward, connect the tow-bar at the frame above the right axle fin (ill.40/arrow).



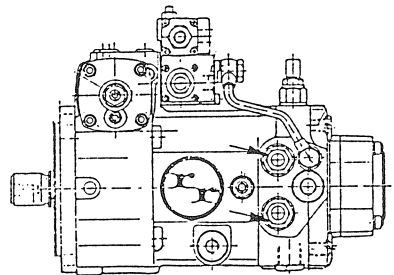
I11. 40

If vehicle has to be towed backward, connect the tow-bar in the eyelet under the the counterweight (ill.41/ arrow).



I11. 41

The hydrostatic transmission has to be switched to free-oil-flow before towing the machine. Unscrew the spring cage of both high-pressure-limit-valve 2 turns. Use fixed spanner NW22 (ill.42/ arrow).



I11. 42

Towing speed has to be adjusted to the emergency steering