

5. Dismounting and mounting of bucket and attachments

- (1) Put shovel arm in lowest position and operate the quick-change frame (ill.23) to drop buckets.
- (2) Pick-up bucket or attachment with quick-change frame and lift bucket or attachment with simultaneous tilting of the quick-change frame till the frame sits close to the bucket or attachment. Lock bucket or attachment with hand lever (ill.15/6) and ill. 24/arrow.

ATTENTION!

Check correct suspension and locking.

- (3) If a multi-purpose bucket is fitted, the hydraulic unit of the bucket has to be connected with the hydraulic line of the quick-change frame after carrying out operations 1 and 2 (ill.25).
 - Unscrew safety caps from rapid couplings at the bucket.
 - Separate rapidly couplings from the cylinder at the quick-change frame and screw them to the rapid couplings of the shovel.
 - Screw safety caps on the cylinder connections.

ATTENTION!

Keep connections clean and check for tightness.

5.1 Type of buckets/size of buckets

0,8 m³ standard bucket
1,2 m³ lightweight material bucket

0,7 m³ multi-purpose bucket
all buckets with or without teeth

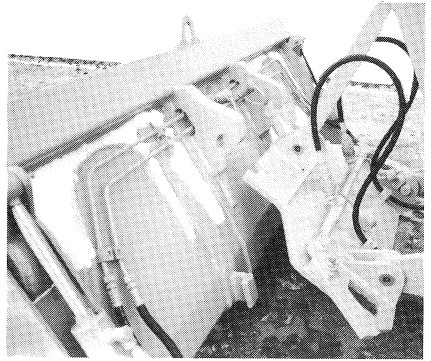


Illustration 23

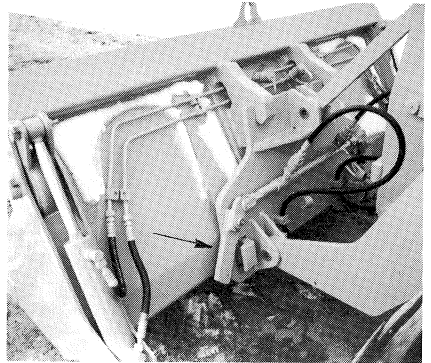


Illustration 24

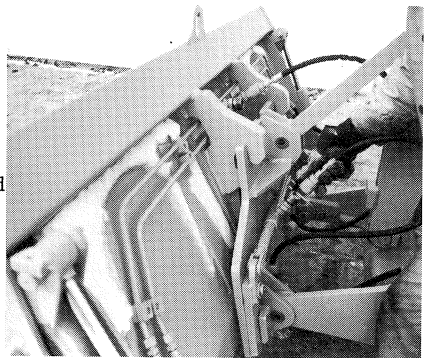


Illustration 25

5.2 Attachments

Backhoe, laterally displaceable with hydraulic lock, slewable at 90° to the left or to the right.

Shovel widths from 280 to 600 mm

Shovel capacity from 75 to 145 litres (acc.to SAE)

Break-out-force at dipper arm max. 1870 daN

Break-off-force at shovel cutting edge 4000 daN

Diagram of reach

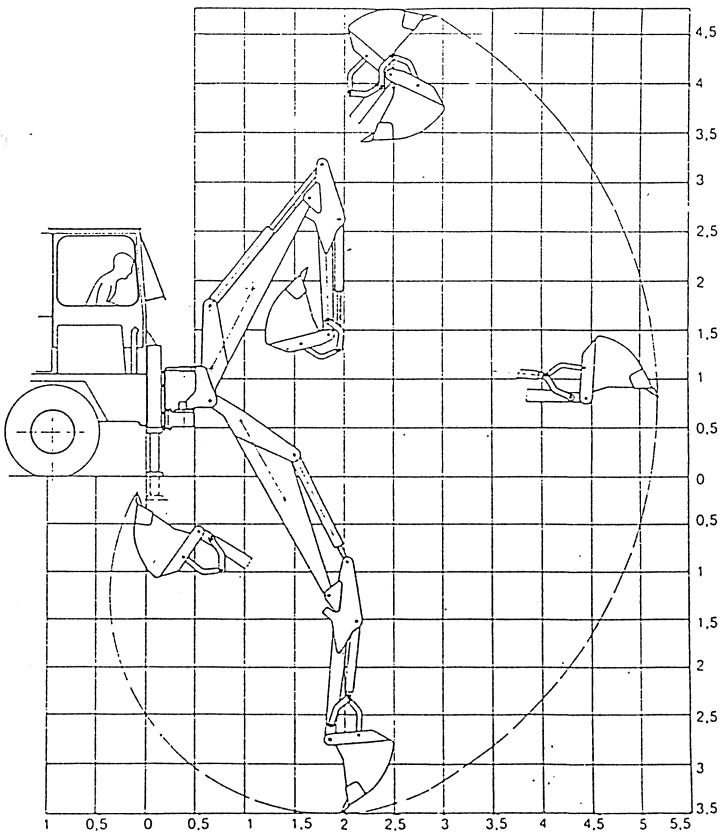
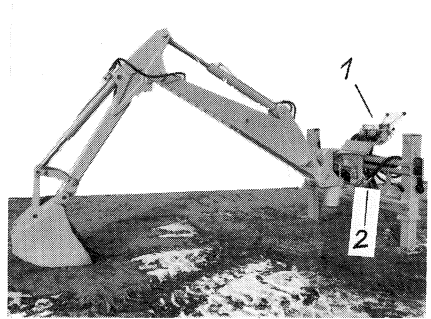


Illustration 26

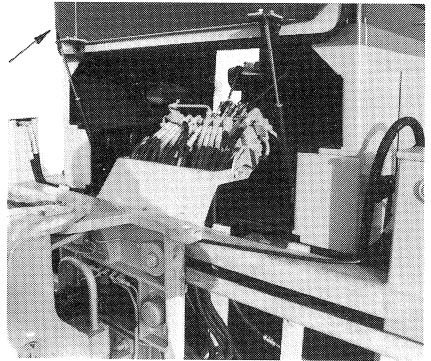
Mounting of backhoe

Ill. 27 shows a backhoe mounted on the basic machine. The control valve (ill.27/1) is slewed down and the hydraulic connection (ill.27/2) provided with a safety cap. The backhoe is prepared for mounting.



Ill. 27

- (1) Unlock the rear screen of the loader and push it upwards (ill.28/arrow).
- (2) Drive the loader in such a way to the backhoe that the recesses for clamping jaws of loader and backhoe are in line.

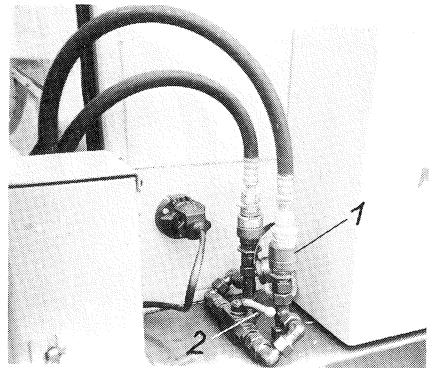


Ill. 28

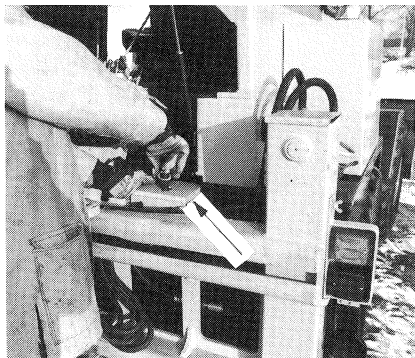
- (3) Unscrew the safety caps of the rapid coupling on the backhoe and at the loader, connect the rapid couplings (ill.29/1), close ball stopcock (ill.29/2).

ATTENTION!

Keep the connections clean and check for tightness.

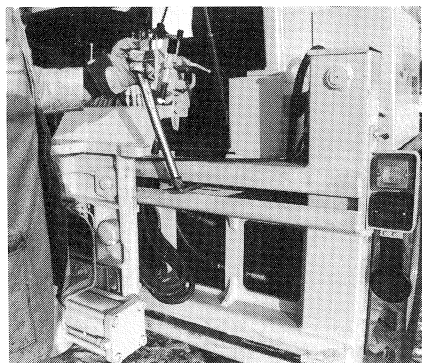


Ill. 29



Ill. 30

- (4) Start engine of loader and align backhoe in such a way that the clamping jaws can be fastened without problems (ill.30/arrow). Check if clamping jaws are tightened.

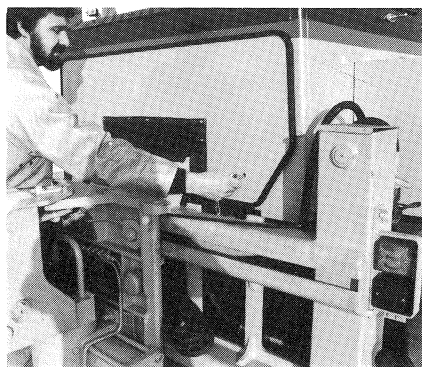


Ill. 31

- (5) The position of a distance piece will be changed with a hexagonal recess spanner in such a way that the tolerance between the backhoe and the loader can be limited on a minimum (ill. 31).

ATTENTION!

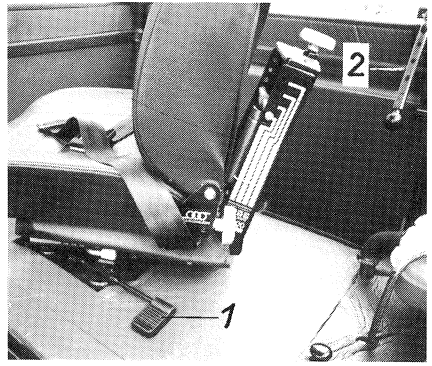
Check, tighten-up if necessary resp. adjust the tolerance between backhoe and loader as well as the clamping jaws after a short test use.



Ill. 32

- (6) Close and lock the rear lid of the loader (ill. 32)

- (7) Turn driver's seat 180°
Unlock, by pressing down,
the locking device (ill.
33/1) before turning. The
control valve will be
slewed high acc. to the
seat position and faste-
ned with the winged screws
which are lateraly fitted.
- (8) The rear window can be
closed, if wanted, or
slewed out in steps by
means of the adjusting
guide rail (ill.33/2).



I11. 33

NOTE!

- Operation with backhoe
described on page 19.
- All grease points of the
backhoe are to be lubri-
cated before using the
backhoe and after each
10 hours of continuous
work.

Pallet forks

The pallet forks can only be used in connection with quick-change frame. Mounting acc. to para 5.

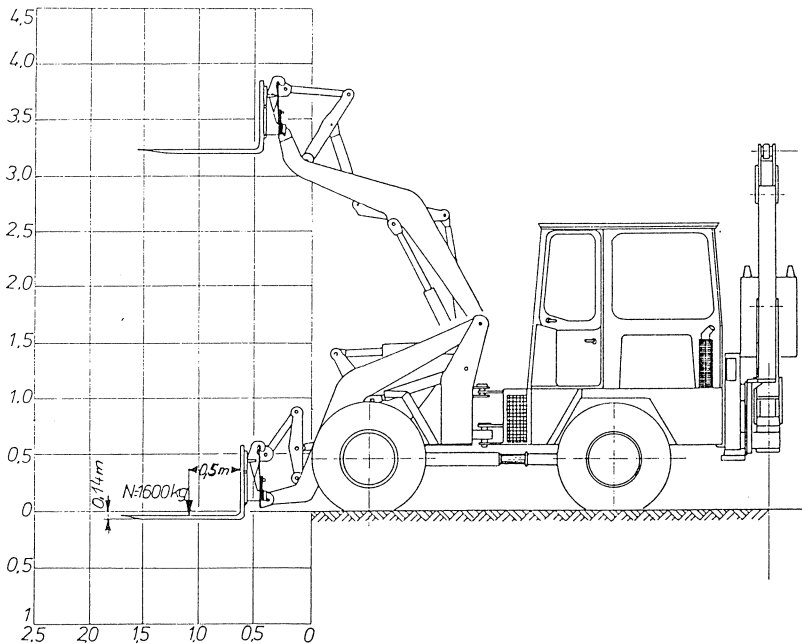
Ensure that there is a good connection to the quick-change frame if mounting the pallet forks.

A lateral adjustment of the forks is possible in steps.

Fork tines distance: min. 216 mm } Locking groove distances are
max. 1054 mm } measured acc.to DIN 15173, load
capacity category 2, row 2, in
fork centre.

Adjust both fork tines at the same distance to the center, make sure the load is centered and placed on both tines.

Diagram of reach



111.34

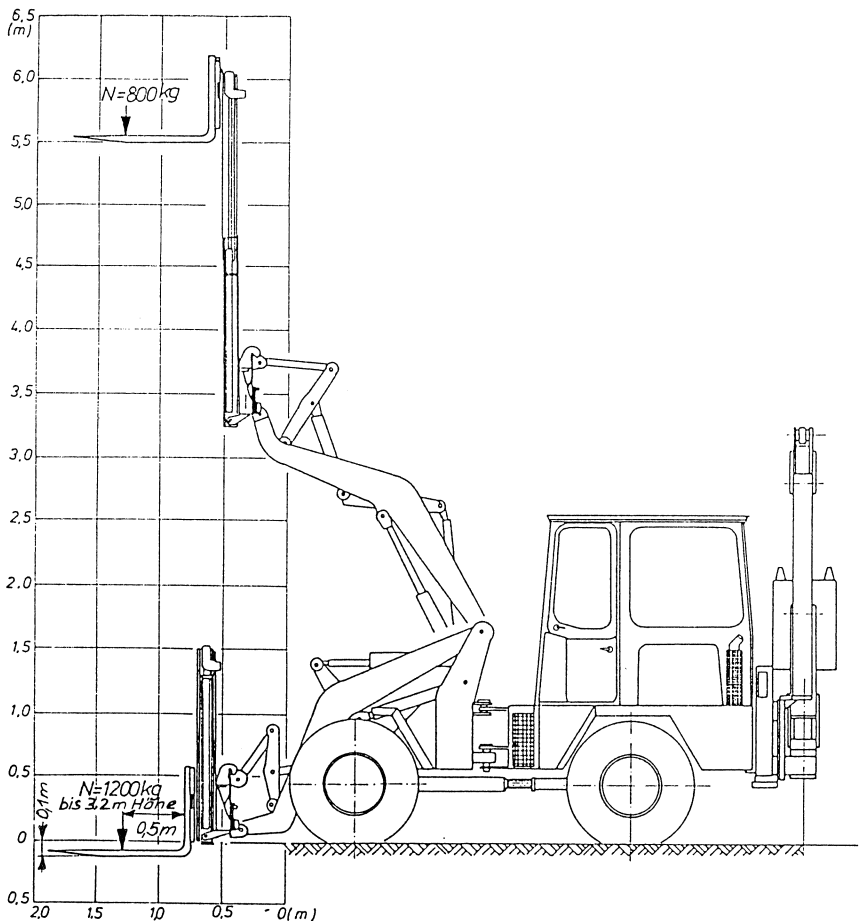
Telescopic high-lift

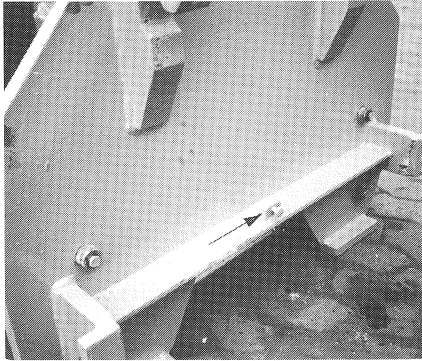
The high-lift can only be used in connection with the quick-change frame and tilt cylinder lock. Mounting acc. to description on page 32. Ensure that there is a good connection of the high-lift to the quick-change plate during mounting. A lateral adjustment of the fork tines is possible. Adjust both tines at the same distance to the center, make sure the load centered and placed on both fork tines.

Fork tines distance: min. 216 mm } Locking groove distances are
max. 1054 mm } measured acc. to DIN 15173,
load capacity category 2,
row 2, in fork tines center.

All grease points are to be lubricated before using attachment or every 10 working hours.

Diagram of reach





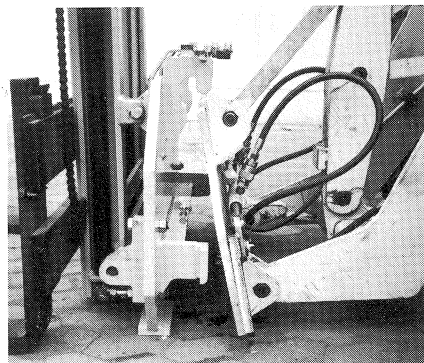
111. 36

Mounting the telescopic high-lift

- (1) Check that contact screw is tight (ill. 36/arrow).

NOTE!

Tighten contact screw, if loose before mounting the attachment. Adjust the screw afterwards, see point (3).



111. 37

- (2) Pick-up the telescopic high-lift with the quick-change frame, (ill.37) lift up and tilt the quick-change frame back till the high lift is laying completely against the frame. Lock the high lift with the frame by means of the hand lever (ill.15/6).

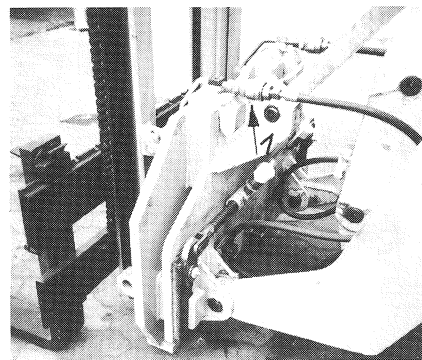
- (3) Arrange the hydraulic connections between loader and high lift by means of rapid couplings (ill.38/1). Make a function test of the E-switch.

NOTE!

The contact screw (ill.36/arrow) has to press the indexing bolt of the E-switch deeply enough that the switch point is reached. Don't exceed the free-play of the E-switch, otherwise the E-switch will be destroyed.

ATTENTION!

Check correct mounting, secure wedging, tilt locking system and that the attachment is working properly before operation.



111. 38

Multi-purpose bucket

The multi-purpose bucket can be fitted to the quick-change frame or directly to the loader lift arms.

The multi-purpose bucket can be used for digging, scraping, loading or as a grab.

The procedure for attaching the bucket to the machine is described in para 5.

ATTENTION!

Check that the rapid couplings are clean and make sure they are firmly connected.

Lubricate the grease points each time before using the attachment or every 10 hours of operation.

Diagram of reach

