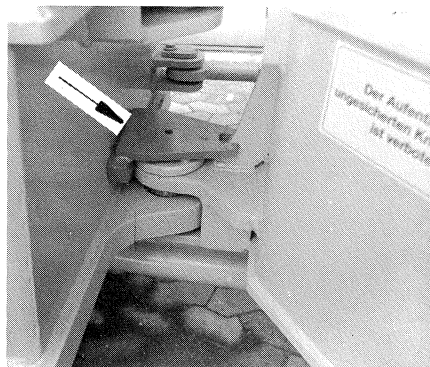


8 Maintenance

ATTENTION!

Engine is cut-off.

All necessary service and maintaining works at the basic unit can be quoted from the servicing schedule. We point out that faults, resulting from not observing the servicing schedule, will not be repaired under warranty.



I11.45

Before doing service- and maintaining works, done under the shovel arm, a shovel arm support has to be put between frame and shovel arm.

Articulation lock (I11.45/arrow) has to be secured before doing service- and maintaining works in the articulation area.

Guard the vehicle against rolling away by wedges; one wedge for each axle.

Do the oil checks if loader excavator is in a horizontal position and shovel arm in lowest position.

Do oil check if vehicle has working temperature.

Change damaged filters immediately.

Clean grease nipples before greasing.

Lubricate rod links and hinges for which a greasing is not provided from time to time with oil.



I11. 46

Checking axle oil

- (1) Unscrew plug out of the axle bracket (I11.46/1). Oil level should reach to the plug bore.
- (2) Unscrew the plug out of the planetary gear (I11.47/arrow). Oil level should reach to the plug bore.



I11. 47

Changing axle oil

- (1) Unscrew plug out of axle center gear (I11.46/2).
- (2) Turn the wheel in such a way that the plug (I11.47/arrow) is placed in the lowest position. Unscrew plug.

ATTENTION!

Collect leaking oil.



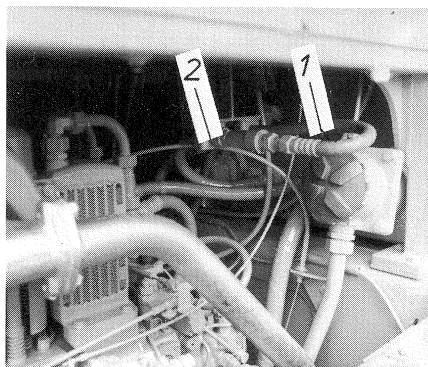
I11. 48

Hydraulic oil reservoir

Capacity of hydraulic oil reservoir is 40 litres. If oil level sinks so low that the oil gauge (I11.48/1) is empty if loader excavator is in horizontal and shovel arm in lowest position, oil has to be refilled. The filler cap is on top of the hydraulic oil reservoir (I11.48/2), the drain plug is at the reservoir bottom and can be reached via mudguard area.

Hydraulic filter

The suction filter (I11.49/1) and the return flow filter (I11.49/2) are installed in the side wall of the hydraulic oil reservoir (accessible from engine area). Unscrew cover before changing filters. The oil supply to the filter housing is cut-off automatically during filter changing. Smear the seal with oil before inserting the new element.



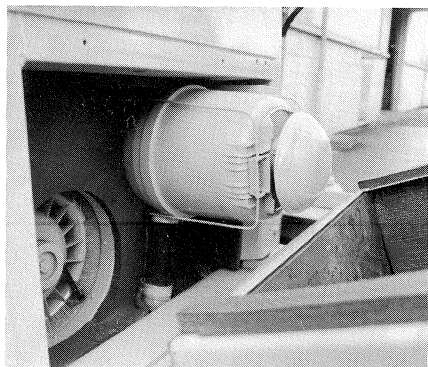
I11. 49

ATTENTION!

Collect leaking oil which is running out of filter housing.

Air filter (for air-cooled engine)

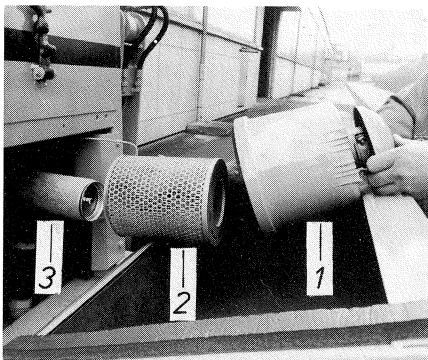
- (1) Swing air-intake cap to the side.
- (2) Push the filter clamps to the side.
- (3) Remove dust collecting pot (I11.51/1) and filter element (I11.52/2).
- (4) Clean dust collecting pot.
- (5) Clean filter element and replace if necessary.



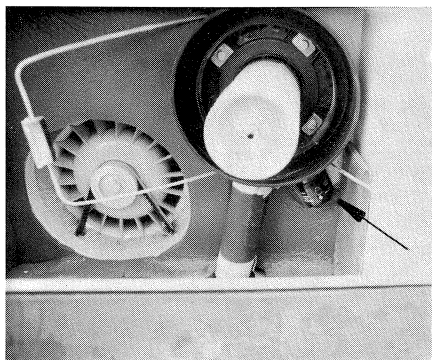
I11. 50

NOTE!

- Don't blow with compressed air with a higher pressure than 5 bar from inside to outside.
- Shows the servicing indicator after done maintenance still red, change also the inner cartridge (I11.51/3).



I11. 51



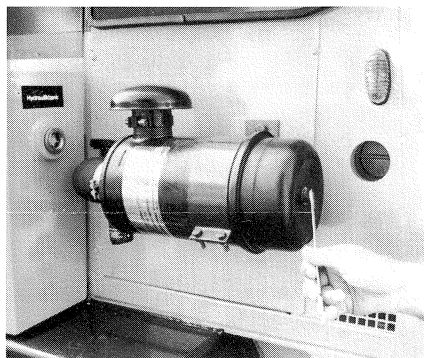
I11. 52

ATTENTION!

Check if packing is damaged before installing filter element. Press releasing knob of the vacuum indicator (I11.52/arrow) till red clogging indicator rebounds. Check air-conducting between filter and engine and replace if necessary.

(6) Dust separation valve

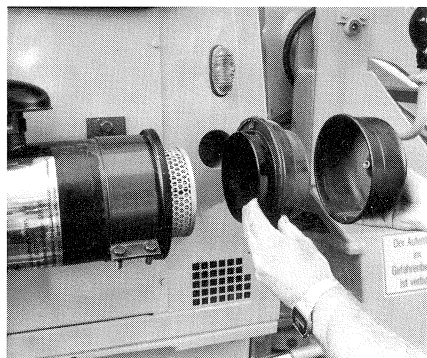
The dust separation valve (rubber spout) shall be compressed several times by hand approx. all 10 working hours. The dust separation valve is in the motor area on the left side in the air conducting.



I11. 53

Air filter (for water-cooled engine)

- (1) Screw fixing screw out of the dust collecting pot (I11.53).



I11. 54

- (2) Remove dust collecting pot lift the cyclone inset out off the dust collecting pot and clean both parts (I11.54)

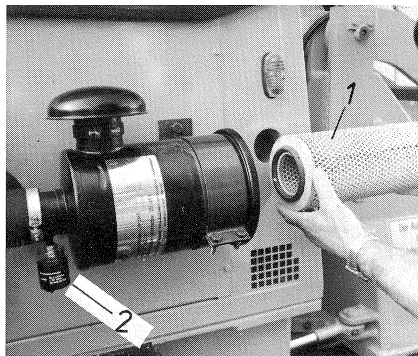
NOTE!

Please pay attention on correct installation of cyclone inset.

- (3) Remove filter element, clean, replace if necessary (I11.55/1).

NOTE!

- Don't blow with compressed air with a higher pressure than 5 bar from inside to outside.
- Shows the servicing indicator (I11.55/2) after done maintenance red again change filter element.



I11. 55

ATTENTION!

Check if packages are damaged before fitting the filter element. Press releasing knob of the vacuum indicator (I11. 55/2) till red clogging indicator rebounds. Check air-conducting between filter and engine and replace if necessary.

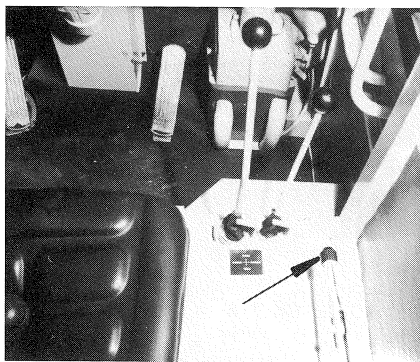
Braking system

Service brake

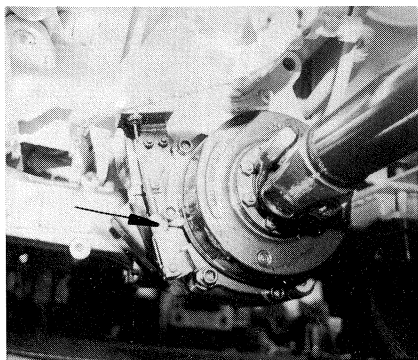
Service brake is maintenance free (hydrostatic drive). The service brake has to be checked before each use of the loader excavator. Braking retardation forward same as backward.

Parking brake

Adjustment of the parking brake will be done at the turning handle of the hand lever (I11.56/arrow).



I11. 56



Ill.57

Adjustment

- Turn hand lever in its released position (Ill.56)
- Adjust initial stress by control grip
- The initial stress is correctly adjusted if the lever can be put without much force from its horizontal position to the vertical position.
- Do a braking test. The brake effect has to be so strong that the vehicle, being in road gear, will be hold if giving full throttle.
- Is the adjustment at the control grip impossible because of a too wide setting way, the coarse adjustment has to be done at the bracket head of the supplementary gear (Ill.57/arrow).

Water-filling in the tyres

Tyre filling with prepared mixture will be done as follows:

1. Turn wheel so that valve is in topmost position.
2. Unscrew valve inset and screw-in connecting nut (I11.58)
3. Screw tyre inflator valve on the connecting nut.
4. Let the mixture flow in from a higher positioned reservoir (I11.59).
5. Actuate air-release-knob at the tyre inflator valve from time to time (I11.59).
6. Unscrew tyre inflator valve, screw-in valve inset and blow up tyres with pneumatic pressure.
7. Check filling
Turn wheel till valve is in a horizontal position (I11.60)

In this position mixture has to come out if actuating the valve.

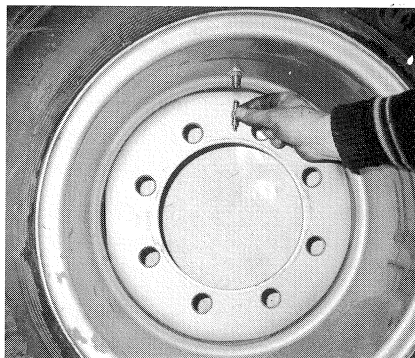
Mixture: 46 l water
27 l magnesium-chloride

ATTENTION!

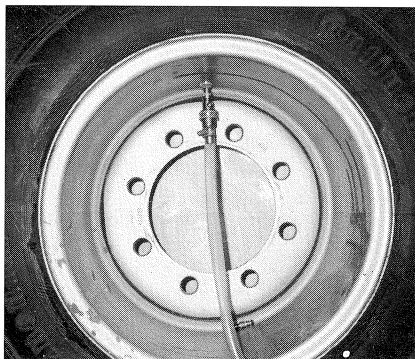
Pour magnesiumchloride in the water and never water in the magnesiumchloride. Don't let drop mixture in the eyes, on the skin or on the clothing.

NOTE!

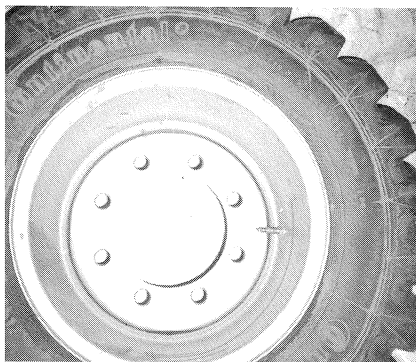
Tyre pressure acc. to the tyre size. See table



I11. 58



I11. 59



I11.60