

5. Stopping and Parking the Loader

- (1) Park the machine on a hard surface; and, whenever possible, on level ground.
- (2) Lower bucket or attachment to the ground.
- (3) Place backhoe in "transport position".
- (4) Put drive-control lever into neutral ("O" position).
- (5) Engage parking brake.

WARNING

If parking on a slope cannot be avoided, then it is necessary, in addition, to place a chock before one of the wheels and to insert the articulation lock.

- (6) Stopping the engine :
 - press down the small plate at the bottom of the accelerator (Illustration 26/arrow) until the engine stops.
 - If the engine is very hot, let it run for 2-3 minutes in neutral, before turning it off.

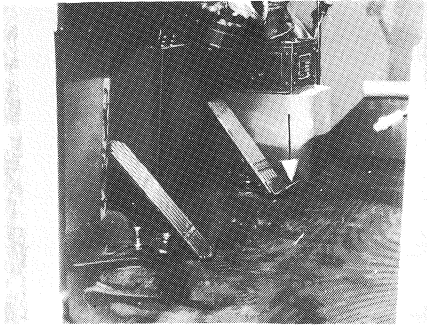


Illustration 26

- (7) Turn ignition key to the left and withdraw.